

# PCS for Tatweer New Well Manifolds Project, Awali Fields, Bahrain



**Contact:**

Prudent Solutions WLL  
 P. O. Box 11091,  
 Manama,  
 BAHRAIN  
 Phone: +973 1745 6180  
 Fax: +973 1745 6190  
 www.prudentolutions.net

**Founding year:**

1999

**End User:** Tatweer Petroleum, Bahrain  
**Client:** JGC Gulf International Ltd.  
**Segment:** Oil & Gas

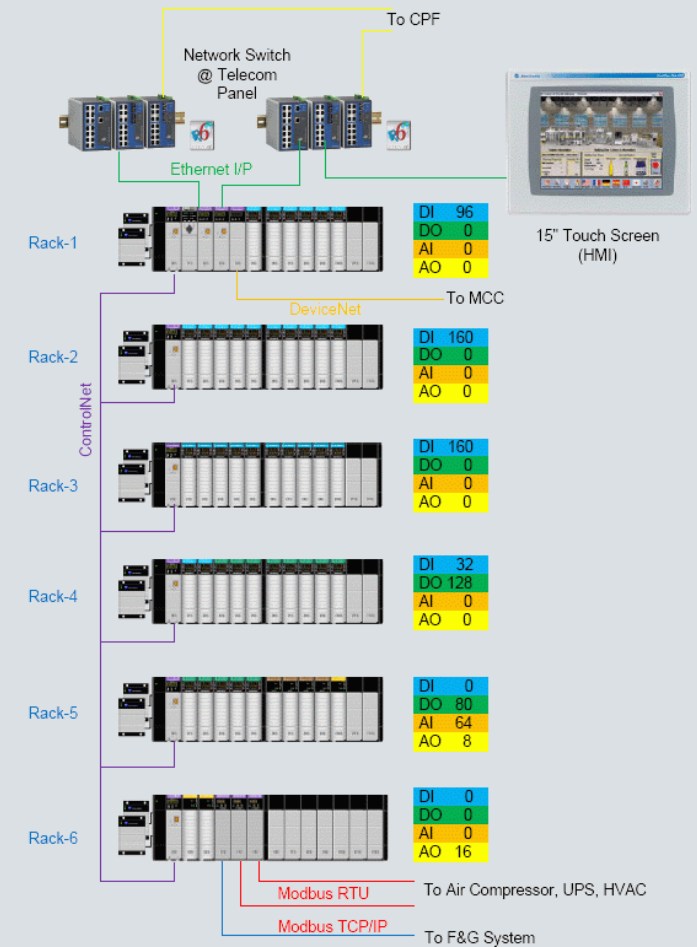
## Requirements of the customer:

- In 2012, Tatweer Petroleum undertook field development project to increase the capacity of the oil and associated gas production in the Bahrain Awali field & planned to install fifteen (15) New Well Manifolds to meet this increased production target. Each of the New Well Manifold was designed to handle 3,000 bbl/day oil, 20,000 bbl/day produced water, and 20 MMscfd gas. M/s WorleyParsons did the front end engineering for this project & the EPC contract was awarded to MCSC/JGC Intl.
- As a part of this project, JGC Intl. was engaged in the automation of Well Manifolds and tank batteries. In this connection, M/s Prudent Solutions WLL (MAC- Main Automation Contractor for Tatweer) was awarded the contract to supply & commission the Process Control System (PCS) for all fifteen (15) New Well Manifolds for remote automatic operations.



## Short description of the solution

15 independent ControlLogix Systems with PaneView-Plus communicating to ICONICS SCADA in the Control Room.



# PCS for Tatweer New Well Manifolds Project, Awali Fields, Bahrain



## Contact:

Prudent Solutions WLL  
 P. O. Box 11091,  
 Manama,  
 BAHRAIN  
 Phone: +973 1745 6180  
 Fax: +973 1745 6190  
 www.prudentolutions.net

## Founding year:

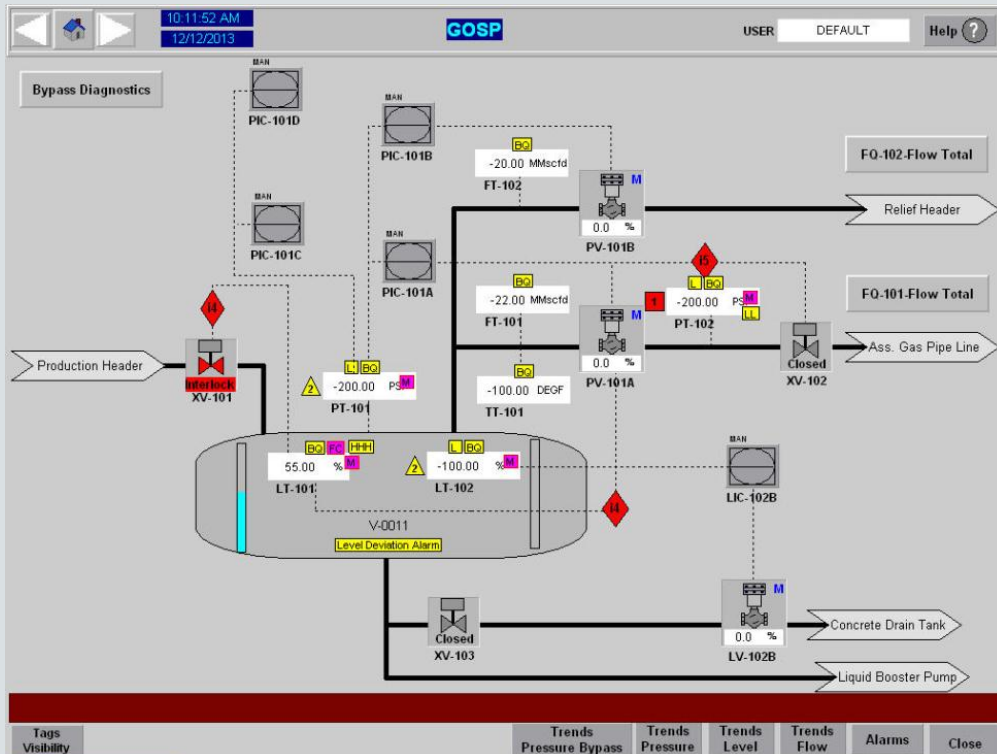
1999



Recognized Systems Integrator

## Implementation by the Solution Partner:

- PCS System Design & Configuration compliant to Tatweer-Oxy ATG Standards.
- HMI Design as per ASM (Abnormal Situation Management) Standards and OXY – Production Facility Best Practice guidelines.



## Benefits for the customer:

- Ease of Operations
- Highly Modular
- Reduces maintenance and downtime costs
- Plant-wide control with a single controller platform

